

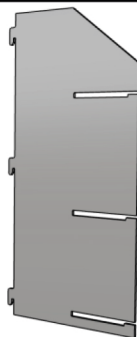
PARTS LIST

- A. Backer Piece X1
- B. Side Piece X2
- C. Shelf Piece X3

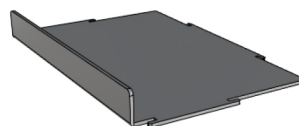
(A)



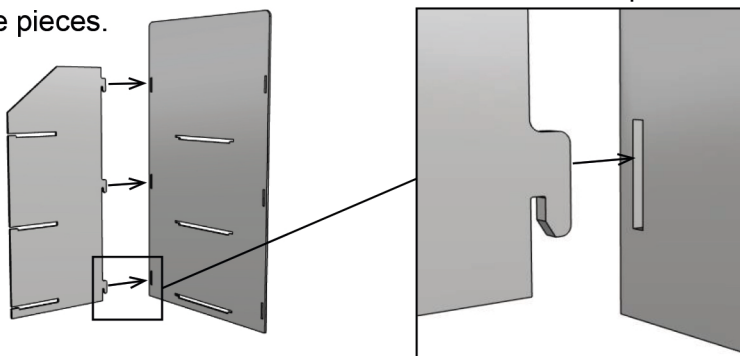
(B)



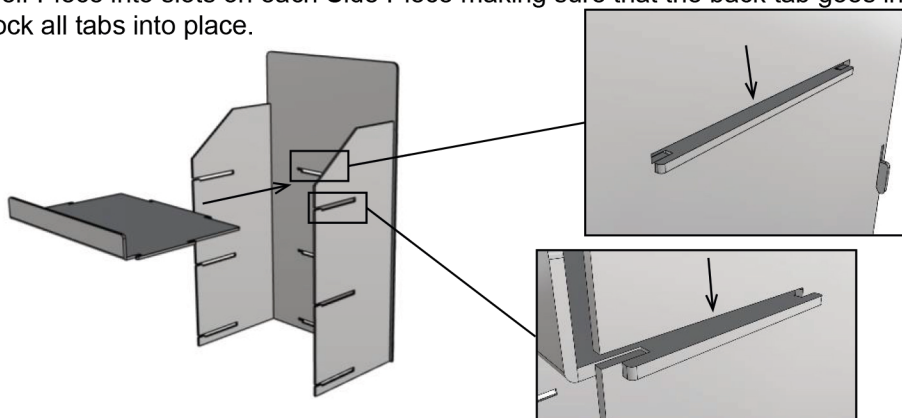
(C)



Step 1. Insert the hook of one of the Side Pieces into the slots on the back piece and slide down, locking into place. Do this for both side pieces.



Step 2. Slide a Shelf Piece into slots on each Side Piece making sure that the back tab goes into the back slot. Press down on Shelf to lock all tabs into place.



Step 3. Assemble the other 2 shelves the same way as in Step 2. The assembly is finished.

